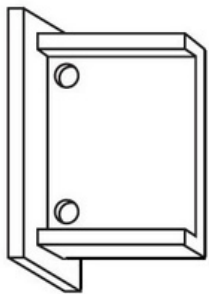


CROPPING CHANNEL END PLATES

At Highland, we want to give you the best coating finish possible. The purpose of this information sheet is to provide specific guidance targeted at areas within the fabrication process that will lead to improvements in the finished product. It is our aim to educate and provide awareness that will save our customers money from correcting potential design flaws.

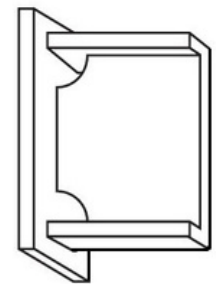
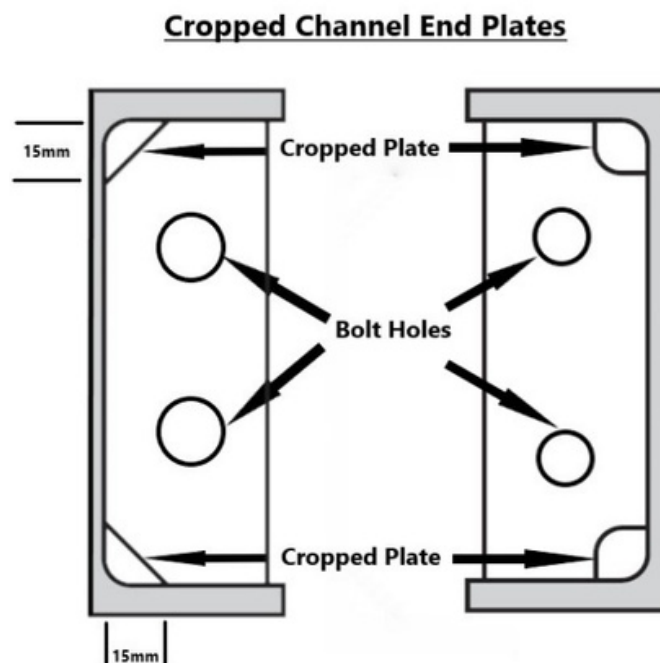
Channels unlike H-beams are asymmetrical and therefore have a tendency to fall back on themselves whilst being suspended thus frequently trapping zinc. Prior to fabrication, considering important information like cropping channel end plates will give you the best finish on your galvanized and powder coated channels or channel frames.



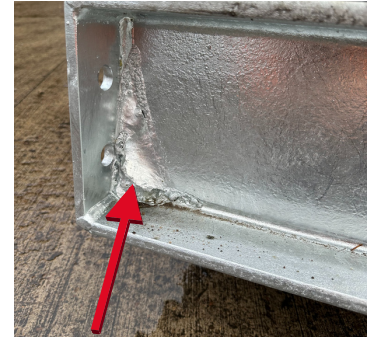
Drilled Channel



Trapped zinc



Cropped Channel



Trapped zinc

Crops or snipes in locations where air, water and zinc would normally be trapped allows the zinc to run freely, leaving your project with a superior quality finish. If you are at all unsure about any aspect of a design, one of our technical experts would be more than happy to discuss this with you.

After all it is much easier and less expensive to change a drawing than to alter material after fabrication!

Should you wish any further information please do not hesitate to contact one of our experts on
Elgin – 01343 548855 or
Cumbernauld – 01236 731444
or alternatively email any enquiries direct to our technical team at
design@higalv.co.uk